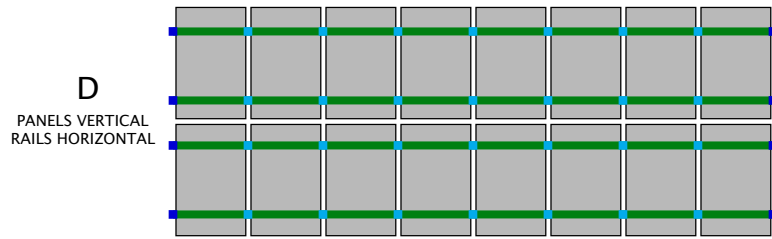
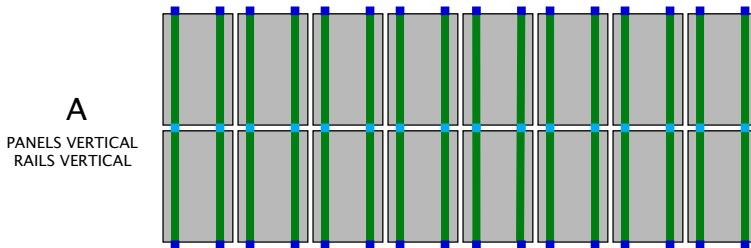
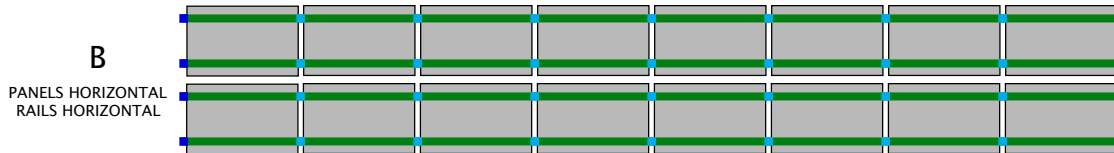
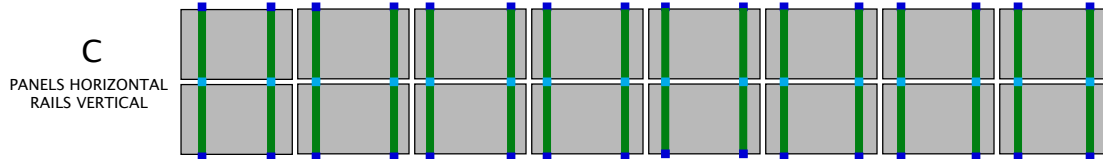


RACKING LAYOUT OPTIONS

MID CLAMP ■
 END CLAMP ■
 RAIL —



UNLESS OTHERWISE NOTED ON YOUR QUOTE, THIS IS THE CONFIGURATION THAT YOUR RACKING HAS BEEN DESIGNED FOR.



RAIL RUNS THAT ARE PARALLEL TO PV MODULES (OPTIONS A & B) MAY VOID PV MODULE WARRANTY. CALL WHOLESALE SOLAR FOR DETAILS.

MODULE MOUNTING RAILS SHOULD CROSS THE LONG SIDE OF THE MODULES WITHIN 2" EITHER SIDE OF THE MANUFACTURER'S PRE-DRILLED MOUNTING HOLES. WITH RAILS, THE MOUNTING HOLES ARE NOT USED BUT DO GIVE THE PROPER LOCATION RECOMMENDED BY THE MANUFACTURERS TO SUPPORT SNOW AND WIND LOADING. THESE HOLES CAN BE SEEN ON THE BACK LONG SIDES OF THE MODULE BETWEEN 7 TO 11 INCHES FROM THE ENDS OF THE MODULE DEPENDING ON THE MODEL.

CLAMPS ATTACH MODULES TO RAILS WITHOUT USING MODULE MOUNTING HOLES

END CLAMPS



IRONRIDGE
 6401604 (D 1.6")
 6401254 (I 1.25")



RENUSOL
 6410006 (SLV)
 6410008 (BLK)

MID CLAMPS

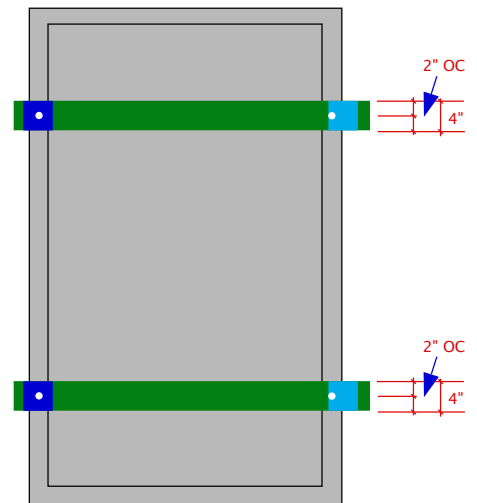


IRONRIDGE
 6451014 (D 2.25")
 6910544 (I 2.0")



RENUSOL
 6410005 (SLV)
 6410007 (BLK)

OPTIONS D & C



WHOLESALE SOLAR
www.wholesalesolar.com
 1-800-472-1142

MODULE GROUNDING

MODULE FRAMES MUST BE GROUNDED (EGC) VIA UL APPROVED WEEB CLIPS OR UL APPROVED LAY-IN LUGS.



WEEB CLIPS - "LEGS" IN RAIL GROOVES, ONE PER MODULE FOR MODULE OR MICRO INVERTER GROUNDING (EGC)



CCR (RENSOL)
6410009



DMC (IRONRIDGE XRS)
6400014



4-LEG 9.5
6949504



NO-LEG 9.5NL
2 PER MODULE FOR
GROUND OR POLE MOUNTS
6949504

LAY-IN LUGS - ONE ONLY AT ONE END OF RAIL LENGTH OR ONE PER MODULE FOR ELECTRICAL GROUNDING (GEC) [N/A FOR ENPHASE]



IRONRIDGE LUG
W/WEEB CLIP
6910554
6400024



RENSOL LUG
W/WEEB CLIP
6410010



MODULE LUG
9934145

WIRE MANAGEMENT CLIPS

(2-3 CLIPS PER MODULE)

RACKING INSTALLATIONS WITHOUT WIRE MANAGEMENT CLIPS MAY LEAVE PV WIRE LOOSE AND IN CONTACT WITH ROOF OR OTHER SURFACES. OVER TIME THE EXTERIOR WIRE INSULATION MAY BE WORN AWAY FROM RUBBING AGAINST SURFACES, EXPOSING LIVE WIRE, THUS BECOMING AN ELECTROCUTION OR FIRE RISK.

RAIL CLIPS



ENPHASE
7500011



RENSOL
& ENPHASE
6410019

MODULE CLIP



.005 - .125 INCH
MODULE EDGE
7500013

RAIL CLIPS FOR IRONRIDGE XRS/XRL



ENPHASE
2977175



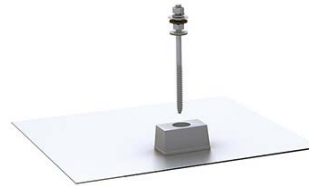
IRONRIDGE
6400077

ROOF ATTACHMENT

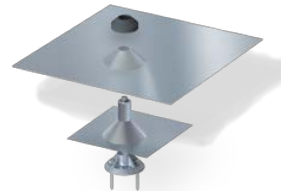
ECO FASTEN FLASHING KIT - 6410012
(RAIL L-FEET SOLD SEPARATELY)



QUICK MOUNT COMPOSITION FLASHING KIT - 6963150



QUICK MOUNT UNIVERSAL TILE FLASHING KIT - 6963287



RAIL L-FEET



IRONRIDGE
6410004



RENSOL
6410004

RAIL GROUND BONDING JUMPER



IRONRIDGE 6400343 RENSOL 6410011

RAIL INTERNAL SPLICE CONNECTORS



IRONRIDGE XRS
6400104



RENSOL
6410003

WHOLESALE SOLAR
www.wholesalesolar.com
1-800-472-1142